

# Wisconsin's Statewide Attainment Goal



In 2017, WTCS, UW, and WAICU received a grant from the Lumina Foundation to support the partners' attainment goal. The higher education partners are collaborating to ensure those between the ages of 25 and 64 have every opportunity to earn degrees and high-value education credentials. Of particular interest is ensuring these opportunities are equally accessible to all prospective students, including first-generation college students, low-income students, people of color, and working adults.

## Why This is Important

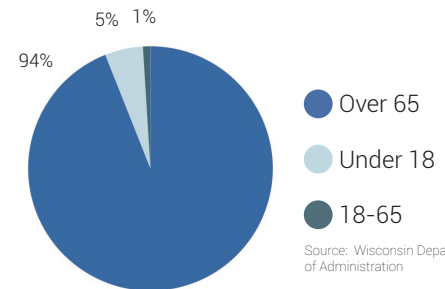


A higher "attainment rate" - the proportion of those aged 25-64 with an education credential beyond high school - is tied to **greater labor force participation and increased earnings**.

The partners also believe that anyone who wishes to pursue education after high school should have every **opportunity** to do so.

## Why This is Urgent

Wisconsin Population Growth



Source: Wisconsin Department of Administration

### Wisconsin's population is aging.

The vast majority of Wisconsin's projected population growth from 2010-2040 is in the "over 65" age category. This is why the partners believe it is an economic imperative to increase postsecondary attainment.

## Where Wisconsin Stands



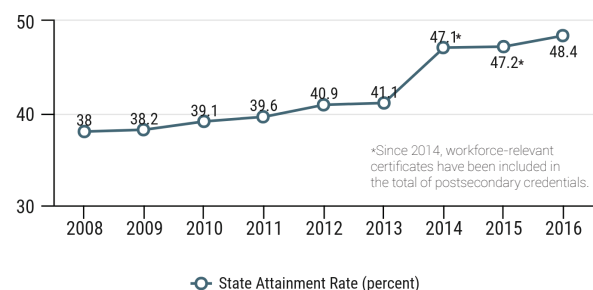
Labor economists estimate that **60 percent of all jobs will require a high-quality postsecondary credential by 2020**.

In 2016, the most recent year for which data are available, **Wisconsin's attainment rate was 48.4 percent**.

Source: Lumina Foundation, A Stronger Nation, 2018 Wisconsin Report

## Wisconsin's Progress

Since 2008, Wisconsin's overall rate of educational attainment has **increased by 10.4 percentage points**.

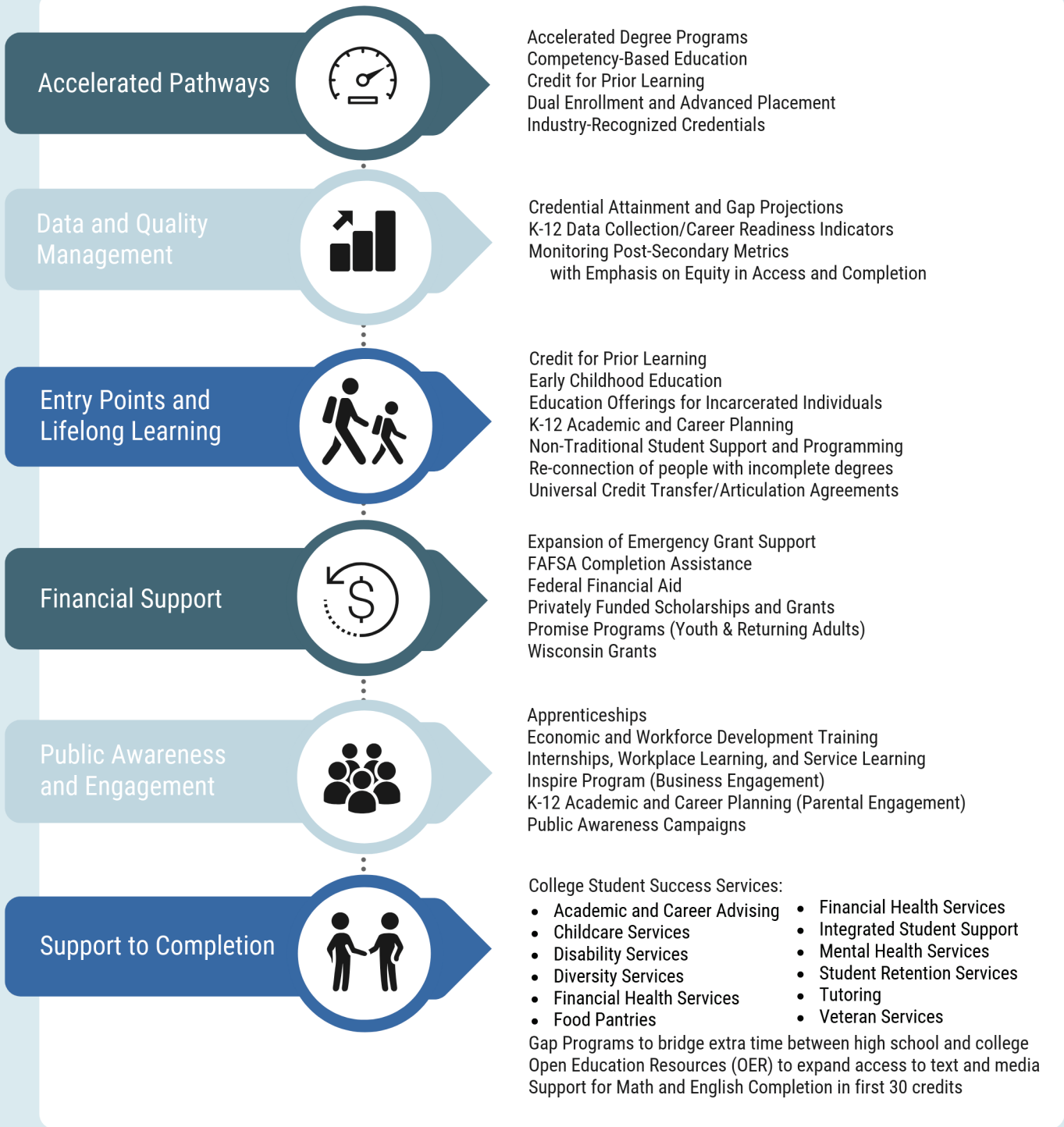


\*Since 2014, workforce-relevant certificates have been included in the total of postsecondary credentials.

Source: Lumina Foundation, A Stronger Nation, 2018 Wisconsin Report

# Solutions

Wisconsin's population is aging. With a wave of retirements and fewer high school graduates, the state faces an urgent and growing need for talent. To meet that need, many more people must continue their learning beyond high school, earning college degrees, diplomas or certificates, or completing a registered apprenticeship. Six key strategies have been identified to help Wisconsin achieve a postsecondary attainment rate of 60 percent by 2027 ... *60 Forward*.



Higher education attainment = talent development

